



GAT MONTHLY MEMBERSHIP PROGRESS REPORT

Results as of: 2/28/2023

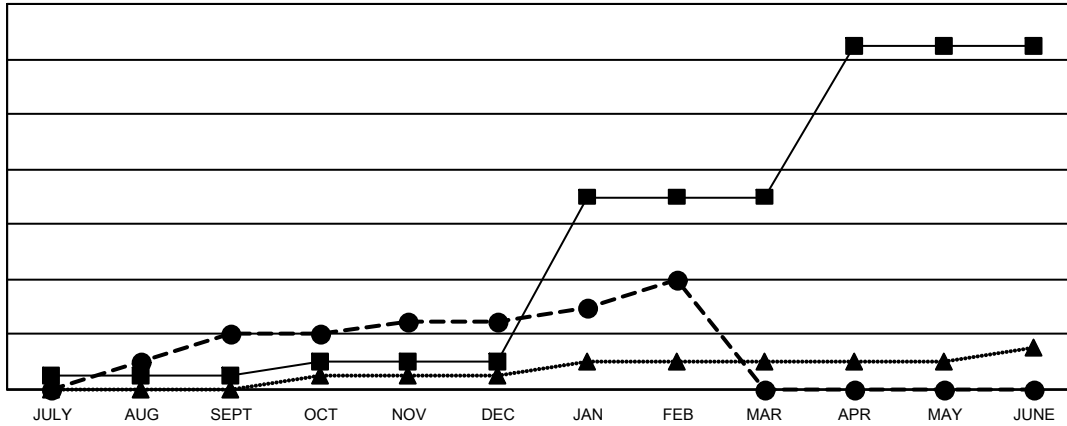
Multiple District 201

LOCATION: AUSTRALIA

Clubs			
RESULTS FOR 2022-2023			
QUARTER	NEW CLUB GOAL	NEW CLUBS	DROPPED CLUBS
JULY/AUG/SEPT	1	4	7
OCT/NOV/DEC	1	1	7
JAN/FEB/MAR	12	3	0
APR/MAY/JUNE	11	0	0

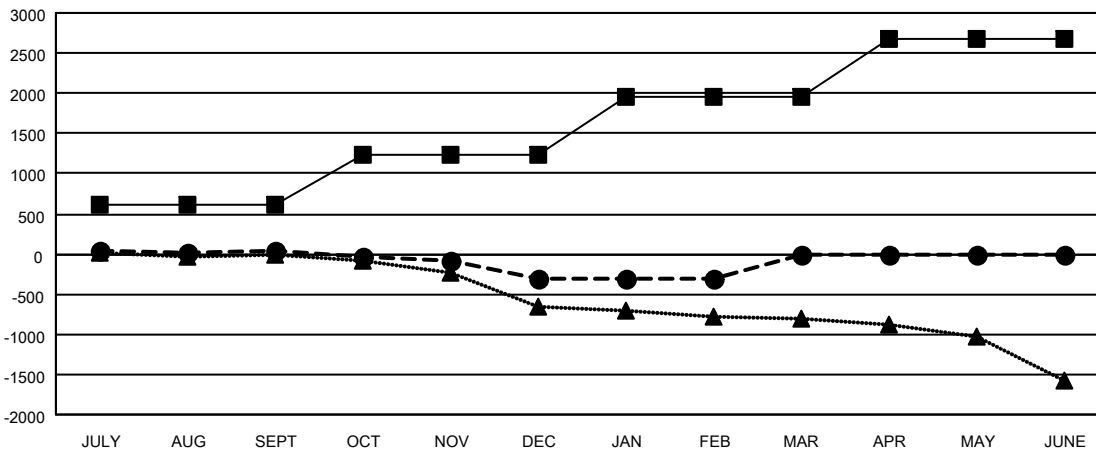
Members			
RESULTS FOR 2022-2023			
QUARTER	MEMBER GROWTH NET GOAL	MEMBER GROWTH ACTUAL	DROPPED MEMBERS ACTUAL (including transfers)
JULY/AUG/SEPT	618	794	634
OCT/NOV/DEC	612	603	848
JAN/FEB/MAR	732	504	442
APR/MAY/JUNE	713	0	0

GOALS AND ACTUAL NEW CLUBS CUMULATIVE



- CURRENT YEAR GOALS FOR NEW CLUBS
- CURRENT YEAR ACTUAL NEW CLUBS
- ▲- LAST YEAR ACTUAL NEW CLUBS

GOALS AND ACTUAL MEMBERS CUMULATIVE



- MEMBER GROWTH NET GOAL
- MEMBER GROWTH ACTUAL
- ▲- LAST YEAR MEMBERSHIP ACTUAL

DROPPED CLUBS: 14	
DROPPED MEMBERS	
DECEASED	247
CLUB CANCELLED	6
OTHER	1,670
TOTAL	1,923

589 CLUBS OF 1165 ADDED 1 OR MORE NEW MEMBERS

[CLICK HERE FOR CUMULATIVE MEMBERSHIP DATA](#)

GENDER DISTRIBUTION	
MALE	14,057 (62.95%)
FEMALE	8,265 (37.01%)
NON BINARY	5 (0.02%)
PREFER NOT TO ANSWER	3 (0.01%)
TOTAL FAMILY UNIT MEMBERS	3,429
FAMILY MEMBERS PAYING HALF DUES	1,739